

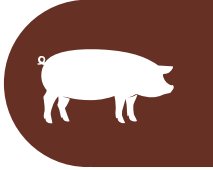


# PORK CHECKOFF REPORT

NOV DEC 2019



## 8,600 Pounds of Ground Pork Donated by Minnesota Pig Farmers



### Local Farmers Help Feed Minnesota Families

National Pork Month is a time to celebrate a delicious, wholesome protein, the families who raise it, and sharing it with those who will benefit from it. The Minnesota Pork Board, along with Compeer Financial, continues to help families in need by donating 8,600 pounds of ground pork to Second Harvest Heartland.

"This type of donation is special for us because lean protein is an area in which we always need more," Thierry Ibri, chief operations and program officer for Second Harvest Heartland expressed. "Only four percent of what we donate as a food bank is lean meat, and we hope to triple that number within the next three years."

The donation was made possible by the Minnesota Pork Board's Oink Outings program and

Compeer Financial's Fund for Rural America. Oink Outings are held throughout the summer months at events around the Twin Cities with the mission of connecting pig farmers with consumers to

answer questions about pigs and pork. Each question someone asks results in one pound of pork donated to Second Harvest Heartland.

*continued on page 2*



Non-profit  
US Postage  
PAID  
Owatonna, MN  
55060  
Permit #110

Minnesota Pork Board  
151 Saint Andrews Court, Suite 810  
Mankato, MN 56001  
507.345.8814  
ADDRESS SERVICE REQUESTED

# MN PORK CALENDAR

## DECEMBER 11

### PGA Plus & TQA – Mankato

9 a.m. – 4 p.m.

Minnesota Pork Board Office  
151 St. Andrews Court Ste. 810  
Mankato, MN 56001

Pre-register:  
[colleen@mnpork.com](mailto:colleen@mnpork.com)  
or 1-800-537-7675

## JANUARY 27

### 2020 MPB Annual Meeting

10:00 a.m. – 12:30 p.m.

Hilton Minneapolis  
1001 South Marquette Ave.  
Minneapolis, MN 55403

## JANUARY 27

### 2020 MPPA Annual Meeting

1:00 – 4:00 p.m.

Hilton Minneapolis  
1001 South Marquette Ave.  
Minneapolis, MN 55403

## JANUARY 27

### Taste of Elegance

Invite Only

6:30 p.m.

Hilton Minneapolis  
1001 South Marquette Ave.  
Minneapolis, MN 55403

## JANUARY 28-29

### 2020 Minnesota Pork Congress

Jan 28: 9:00 a.m. – 5:00 p.m.

Jan 29: 9:00 a.m. – 1:30 p.m.

Minneapolis Convention Center  
1301 Second Avenue South  
Minneapolis, MN 55403

## 8,600 Pounds of Ground Pork Donated by Minnesota Pig Farmers

*continued from page 1*

Over the past nine years, more than 54,000 pounds of donated ground pork, adding up to an approximate 216,000 meals, have been provided to local families and communities in need.

"Being here is incredibly humbling. As many headwinds that we face as farmers, whether it's trade or consumer skepticism, this is the motivating factor that puts the wind back in your sails and the fight back in your day," stated JoDee Haala, President of the Minnesota Pork Board Executive Board. "I would like to thank Second Harvest Heartland for all that they do, as well as Compeer Financial and the Minnesota Department of Agriculture for their generosity and important work they do every day to help Minnesota's farmers."

"Compeer Financial is honored to participate and work with Minnesota pork producers to donate to Second Harvest Heartland," added Mark Greenwood, Chief Diversified Markets Officer for Compeer Financial. "It is an honor to work with the Minnesota Pork Board, and we feel very fortunate to be able to partner together on this donation."

The Minnesota Pork Board works on behalf of Minnesota's more than 3,000 pig farming families to bring value to consumers through research, education, and promotion of pork. Promotions are created to encourage pork consumption; research answers questions facing Minnesota pig farmers; education helps pig farmers raise their animals and bring a safe and wholesome pork product to the marketplace. For more information, visit [mnpork.com](http://mnpork.com).

The Compeer Financial Fund for Rural America is the corporate giving program of Compeer Financial, structured to support Compeer Financial's

mission to enrich agriculture and rural America. Compeer Financial's Board of Directors has dedicated one percent of annual net earnings to support the Fund's focus areas of education, youth engagement, rural development and community enrichment, agricultural advocacy and development, and cooperative initiatives. The Fund is managed by a Board of Trustees, made up of team members from Illinois, Minnesota and Wisconsin and members of the Compeer Financial Board of Directors. More information about opportunities available through the Fund can be found at [Compeer.com/giving-back](http://Compeer.com/giving-back).

Second Harvest Heartland is the Upper Midwest's largest hunger relief organization. They partner with food sources and donors, agency partners, and clients to fulfill their goal of feeding hungry neighbors to help them thrive at work, in the classroom, and in their communities. 532,000 people were served in 2017 and more than 81 million meals were served to children, parents, and seniors in need. 59 counties in Minnesota and western Wisconsin were positively impacted by Second Harvest Heartland who worked with nearly 1,000 food shelves, pantries, and other partner programs to provide food for the hungry. For more information, visit [2harvest.org](http://2harvest.org) or call (651) 484-5117.



# Join us at the 2020 Minnesota Pork Board Annual Meeting

Monday, January 27, 10:00 a.m.  
Hilton Minneapolis, Orchestra  
Preregister to [colleen@mnppork.com](mailto:colleen@mnppork.com)

## MPB MEETING

All Minnesota pig farmers who pay into the Pork Checkoff are stakeholders in the Minnesota Pork Board (MPB) and are encouraged to attend the Annual Meeting on January 27, beginning at 10:00 a.m. at the Hilton Minneapolis, Orchestra (1001 S. Marquette Ave, Minneapolis).



The MPB Annual Meeting will feature updates on programs, 2020 MPB Pork Checkoff financial information, MPB Executive Board elections, Pork Act Delegate elections, and Pork Checkoff related resolutions. Resolutions submitted at the meeting will require a two-thirds margin to be brought to the floor for discussion and a three-fourths majority vote for approval.

National Pork Board chief executive officer, Bill Even, will provide an update on issues that are currently facing the pork industry and the action steps the National Pork Board is taking to address those issues. Even will speak about ongoing industry growth and talk about the National Pork Board's program shift to Checkoff 4.0 - a vision that will reposition the Checkoff as a nimble, flexible problem solver in pork research, promotion, and education.

## LUNCH AND MPPA MEETING

A complimentary luncheon for all meeting participants will be served from 12:30 - 1:00 p.m. The Minnesota Pork Producers Association (MPPA), a voluntary membership association funded by investors in the Strategic Investment Program (SIP) and Pork Partners, will hold its annual meeting following lunch from 1:00 - 4:00 p.m. The MPPA focuses its work on legislative and public policy matters. Only those who are enrolled in SIP or Pork Partners can vote and participate in discussions at the MPPA Annual Meeting.

## PREREGISTRATION

To help with meal planning, seating, and handouts, preregistration is requested. To preregister, contact Colleen Carey at the Minnesota Pork Board office by calling 1 (800) 537-7675 or email [colleen@mnppork.com](mailto:colleen@mnppork.com).

## PUBLIC NOTICE

Public Notice by Minnesota Pork Board and the National Pork Board

The election of pork producer delegate candidates for the 2021 National Pork Producers (Pork Act) Delegate Body will take place at 10:00 AM, Monday, January 27, 2020 in conjunction with a Board of Directors meeting of the Minnesota Pork Board at 1001 Marquette Avenue South in Minneapolis, Minnesota. All Minnesota pork producers are invited to attend.

Any producer, age 18 or older, who is a resident of the state and has paid all assessments due may be considered as a delegate candidate and/or participate in the election. All eligible producers are encouraged to bring with them a sales receipt proving that hogs were sold in their name and the checkoff deducted. For more information, contact the Minnesota Pork Board Office, 151 St. Andrews Court, Suite 810, Mankato, Minnesota. (507) 358-8814.



- All-natural, safe, and biodegradable
- Patented time-release technology
- Easy to use, no mixing required
- Naturally liquefies manure
- Reduces sludge and prevents crusting
- Reduces flies and odor
- Two easy treatments per year



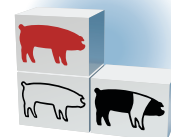
[www.myhealthyfarms.com](http://www.myhealthyfarms.com)  
866.272.3775

## Tried & True



### Compartment offers:

- Duroc, York, Landrace boars and open gilts
- Duroc, York and Landrace semen
- PRRS naïve herds and boar stud
- 50+ years of genetic selection
- 25+ years of scan work for genetic production traits and intramuscular fat.



**Compartment's  
Boar Store, Inc.**

Nicollet, MN • 877-441-2627

# AGENDA & CANDIDATES

MINNESOTA PORK BOARD  
ANNUAL MEETING

MONDAY, JAN 27, 2020

10:00 A.M. - 12:30 P.M.

HILTON MINNEAPOLIS,  
ORCHESTRA

## AGENDA:

### I. Call to Order

JoDee Haala  
MPB President

### II. Introductions

### III. Review of Annual Meeting Procedures

Bruce Kleven  
MPB Annual Meeting Counsel

### IV. Approval of 2019 Annual Meeting Minutes

Myrna Welter  
MPB Secretary

### V. Introduction: 2020 Minnesota Pork Board Candidates

### VI. 2020 Minnesota Pork Board Candidate Elections

### VII. Financial Report & Program Updates

Minnesota Pork Board Staff

### VIII. 2020 Resolutions, Discussion, Action

### IX. 2021 Pork Act Delegates

### X. National Pork Board Update

Bill Even  
CEO National Pork Board

### XI. Election Results

### XII. Announcements

### XIII. Adjourn

pork social

Join Pork Social at  
[www.facebook.com/MinnesotaPork](http://www.facebook.com/MinnesotaPork)

# SOLID. DEPENDABLE. RELIABLE.



#### ALSO AVAILABLE!

- Beams
- Columns
- Gestation Slats
- 4'x10' Solids
- Custom Walkways



#### SLOTTED CATTLE SLAT

- 6" Top Slat Width
- 6" Thickness
- 4'x10' Standard
- 1 1/2" Spacing
- Custom Lengths

#### SLOTTED HOG SLAT

- 5" Top Slat Width
- 5" Thickness
- 1" Spacing
- 4'x10' Standard
- Custom Lengths
- Wear Edge
- Machine Vibrated

#### CUSTOM SINGLE SLAT & CUSTOM AG PRODUCTS

- Contact Us For Inquiries

#### High Performance Urethanes and Epoxies Sealants

We carry a full line of Vanberg Specialized Protective Coatings and Sealers for all your special needs.



[www.superiorconcretemn.com](http://www.superiorconcretemn.com) | (507) 387-7068



We make sure you can spend time tending their roots.

Stevenson Insurance, Inc.

Serving Southern Minnesota for the past 35 plus years  
Offices in: Kasson, Wykoff, Pine Island and Rochester, MN  
Steve Johnson and Jeff Stevenson (507) 634.4580



# Meet the Candidates



## Brad Hennen

**M**y wife, Barb, and I have raised 9 children on our farm near Ghent, MN, and currently have 5 grandchildren. On our farm I finish about 800 pigs at a time from 50 lbs to market. I have served on the MN Pork Research committee as chair, as well as most of the other committees as a member. I have served on various task forces for the National Pork Board, most recently

on the Needle Task Force and the Pork Quality, Safety, and Human Nutrition Committee. My “day job” these days is with Fast Genetics in sales and in logistics.

The greatest challenge facing our industry today is African Swine Fever; keeping it out as a first priority, but also planning for how to eliminate it asap, should we be so unfortunate as to have it infect our herds. I have taken a particular role in working on the Depopulation and Disposal committee to address the best ways to clean up an infected herd. I believe that it is incumbent upon every producer to take the information provided from our industry’s research and figure out how to best apply it to their farm; having a workable plan in place should ASF come to our country, and in particular, to their farm. How will you depopulate your farm if ASF should infect it? How will you dispose of the infected hogs? We cannot afford to merely throw up our hands.

Conversely, ASF is providing for us probably the greatest opportunity for growth that our industry has

ever experienced. How will we take advantage of this challenge to grow our operations in the most sustainable (by every definition!) ways?

**33% Promotion:** I am very supportive of the work done by our board and staff in investing time and funds in improving the image of not only our product, but our industry.

**33% Education:** I am really excited about the impact that our new contracted dietician (Riley) will have in our state conversations with other dietitians and the media! Also, it will be very important to be getting the information out about ASF, and how to keep our industry safe.

**33% Research:** Not all research happens at the state level, of course; in fact, our dollars are often best leveraged at the national level, but there is very important research being done on all diseases affecting pigs, on human nutrition, on sustainability, and in many different areas that are extremely critical to the life of our industry.



## Roger Punt

**I** grew up on a livestock farm where we raised hogs, beef, and dairy. When I got married, my wife and I continued with the hog operation. After experiencing back problems, I began a career with Farm Bureau Insurance which lasted for 31 years. While in the insurance business, I had the privilege of working with many farmers providing the most appropriate insurance plans to minimize their risks. I also custom fed hogs for a local farmer during that time.

In 1995, some of my insurance clients asked me to help them organize a farrowing coop. That led to the company that today is Country Pork. I have served as

the GM since its inception. CP is a farrow to finish commercial hog operation. We also raise and sell breeding stock and have our own feed mill.

**Challenges:** There are many challenges that producers face daily. At the top of the list of concerns would be the trade agreements, genetic advances, educating the

*continued on page 6*



younger generation about our product, foreign animal diseases, good employees, and a growing population. We could talk about these concerns and many more.

Along with these challenges there is also great opportunity. We as producers need to understand we can't address all the concerns by ourselves. The good news is our industry has many resources available to us, many of which are available through MPP.

The best thing I/we can do is support all those who represent

us as pork producers on the local, state, and national level, and I would work to help them build on what has already been accomplished. The Minnesota Pork Producers is a very good organization that assists and represents us in many ways. Along with many other things, they communicate with our legislators, trade partners and consumers the value of our product. We have a growing population and we have a great protein source to take care of them. It will take the whole team to do that.

I think all three areas are critical to the success of producers and need to be funded. In order of importance, I would go A, B, C. As producers we can do everything right, but if we don't have a market it doesn't matter. The other two areas I would probably split event. I would go 50% Promotion, 25% Education, and 25% Research. This question would be much easier to answer if I knew the results you are having with allocation of dollars. We need to build on what's been done in the past!



## Todd Selvik

I grew up on a farm in Waseca, MN. My dad, Bruce, and my uncle, Ron, worked together as they continued the family farm. Our whole operation consisted of 2,500 acres of crops and about 25,000 finish pigs a year. I was involved with the pigs and the crops from a young age and I knew I wanted to be a farmer right away. I went to the University of Minnesota - St. Paul to expand my knowledge and bring something new back to the farm. I received a B.S. Degree in Agriculture Industries and Marketing, and with a couple

internships, I got a great job as commodity trader at CHS. After few years, I decided it was time to come home for good. Now my cousin Clint and I manage the crop and pig operation. My dad and uncle have retired, but still love helping us out. My wife, Meghan, and I moved into my parents' house, at the home farm, after we had our third child this spring. My children are Sydney 4, Ethan 2, and our baby Olivia is almost a year old. I use my experience from CHS to market the crops and it also has helped tremendously with the hog markets. I handle the risk management for our hog operation and our joint ventures. We own our pigs and are a part of the Pipestone System. The majority of our pigs come from Buffalo Run, with some coming from Fox Run. As an operation we strive to be as efficient and effective as possible, always looking for new opportunities.

Although there are many challenges for Minnesota Pork, I think one of the biggest we face is staying relevant to all of its members. I come from a smaller operation compared to the integrators and larger farms. There are also many pork producers that are smaller than our operation. Minnesota Pork needs to stay relevant to the

smaller operations. For these small operations it is hard to make their bottom lines positive and we need all of the help we can get. I think that the board needs to make sure that our voices are being heard and it's a great avenue for those voices. I think with having another smaller producer on the board it will help ensure that all of our voices are being heard.

I think that research needs to be a huge part of the check off. I would say that 50% of the money should go into research. This is a great way for the producers to have a say in what is being studied and advanced. As far as pork promotion and educational programs, they are equally as important. It is great for farmers to get out and show the general public what a farmer and farms look like. The public is getting more and more detached from agriculture. The more detached the public gets, the more regulations and limits they will put on their food sources. The more people know about their food sources the better. Farmers can also benefit from the educational programs as well, whether it's animal welfare or new farming techniques. There is always something new to learn and as farmers we should never stop trying to be educated.



## Myrna Welter

**H**ello pork friends, my name is Myrna Welter. My husband, Randy and I own and work on our farrow-to-finish pig farm near Stewartville. Our family consists of 7 children and 5 grandchildren. They have all played a big role in our family farm. We grow corn, soybeans and alfalfa. From growing up on a pig farm to owning one, pigs have been an important part of both our lives. My favorite place to work on the farm is in the farrowing barn. I like all the excitement of all the new baby piglets!

I am honored to serve as the MN Pork Board Secretary. I am also the Olmsted County Pork Producers, Vice President. I am a member of the Research and Promotion & Image committees. One of my greatest passions is promotion pork. I have helped at numerous grocery store events, Twins & ST Paul Saints Baseball games, Grandmas & Mankato Marathon, Oink Outings, Land O Lakes, Olmsted County Fair and AgriNews Show. I have been involved with the Ag in the Classroom program also. I enjoy coming up with new phone messages and jingles to encourage people to eat pork.

My community involvement includes Farm Bureau, 4-H, FFA, St. John's Lutheran Church, American Legion Auxiliary and Jr. Auxiliary. I work part time at the Stewartville Area Chamber of Commerce, working with membership services. This job has opened a whole new area for my pork promotion.

What is the greatest challenge facing MN Pork? All pork producers have ASF on the back of their minds. We must focus on the positive and that is we have a lot of pork produced in Minnesota! A lot of pork for consumers to enjoy. My role is to continue with promotions opportunities thus increasing pork consumption, creating a demand for our product.

I believe all 3 areas of Pork Checkoff are very important.

Promotion needs to lead the way at 50% both nationally & internationally. We need consumers to know that pork is a safe, healthy and a nutritious product for consumers to enjoy.

Education, I would place at 30%. There are many educational classes MPB hosts for all sizes, ages and type of pork producers.

Research at 20% would support new ideas for the pork industry's future success.

### DiGest 3+3

Now you can  
**LIQUIFY**  
SOLIDS  
IN

■ Pits  
■ Lagoons  
■ Holding Tanks

*New Technology*

- Crust elimination
- Reduces flies
- Reduces solid buildup
- More consistent nutrients
- Faster working
- More nitrogen for crops
- Controls odors
- Available in powder or liquid

Foaming Problems?  
Ask about Digest Foam Eliminator

320-808-7327 • 320-815-1699

www.digest3plus3.com

D&D Distributing • Miltona, MN  
30+ years experience

# RAISE HOGS

FOR RESEARCH

- Unique Business For Sale
- Very Profitable Bottom Line
- Mutual Non-Disclosure Required for Details

For Further Information  
CALL 612-803-6879

## Composting Wood Chips

Enberg Logging Will Deliver:  
Carcass Composting Wood Chips

Our chips are northern hardwoods mixed with pine to create the ultimate carbon material for composting.

Call:  
218-352-6175  
To set up  
your delivery

## Wiechman Pig Co.

A national leader in the marketing of lightweight butchers, sows and boars.

Between Fairmont and Truman, MN on Hwy. 15  
866-521-3383 507-776-5235

## WHY ESTABLISH AN EDMCS/MN?

When a disease emergency hits, neither regulators nor industry will understand all they need to know to control the outbreak.

It takes SHARED KNOWLEDGE and COMMUNICATION to prepare for and manage a disease outbreak because pig pathogens, pork production practices, and regulations change frequently.

Trusted relationships are built when regulatory agencies are engaged with industry *PRIOR TO* an emergency, which improves transparency and leads to a more effective response.

The EDMCS/MN needs to be able to make decisions and take action quickly; this will allow for a rapid, cohesive response in an outbreak.

**A COMMON GOAL:** We are all on the same team in the fight against swine diseases.



## EMERGENCY DISEASE MANAGEMENT COMMITTEE FOR SWINE IN MINNESOTA (EDMCS/MN)

**OVERALL GOAL:** to enhance awareness, address gaps, and develop the preparedness and response plans for swine disease emergencies in Minnesota.

**PURPOSE:** The purpose of the EDMCS/MN is to serve as the advisory group to the Minnesota Board of Animal Health (BAH) for the implementation of the Minnesota Plan for managing a disease emergency or outbreak in swine.

**RATIONALE:** The real and potentially devastating threat of African Swine Fever (ASF) makes the establishment of an EDMCS/MN extremely necessary. Existing plans are not adequately developed for ASF. A functional EDMCS/MN will be able to develop a practical, proactive, and scientifically sound plan to address ASF and other high impact swine diseases of concern as they arise.

**ROLES/RESPONSIBILITY:** Prior to a disease emergency, the EDMCS/MN will assist the BAH with development of a swine disease response plan. During a swine disease emergency response, EDMCS/MN members will provide technical expertise to inform the decision-making process and assist in the development of specific protocols for critical activities to address the outbreak circumstances. EDMCS/MN members should be prepared to represent and/or be a spokesperson for their respective producers, farmers, businesses, agencies, entities, or markets. In addition, members must have the authority to commit resources that their organization may have (including, but not limited to, equipment and people) to support disease response efforts.

**ESTABLISHMENT OF THE EDMCS/MN:** The BAH is the lead state agency that, through their designated representative, will establish the EDMCS/MN, select the members, coordinate meetings and keep Minnesota's pork industry informed of the status of the Minnesota emergency disease response plan. The BAH Swine Program Director will be the permanent EDMCS/MN chairperson and will delegate actions of the EDMCS/MN to the designated representative.

The EDMCS/MN consists of representatives from all facets of Minnesota's pork industry (pork producers of various herd sizes and types, show pig owners, packers, and processors) and representatives from agencies/groups such as the BAH, Minnesota Department of Agriculture (MDA), Minnesota Pork Board (MPB), Minnesota Department of Health, Minnesota Pollution Control Agency, Minnesota Department of Natural Resources, University of Minnesota (UMN), and UMN Veterinary Diagnostic Laboratory. The EDMCS/MN also includes public information officers from the BAH, MDA, UMN, and MPB. Ex-officio members from the USDA are included, such as Veterinary Services Area Veterinarians in Charge, Emergency Coordinator, Food Safety Inspection Service, District epidemiologists, and/or District pork points of contact. The pork industry members were selected by the BAH with input from Minnesota swine veterinarians and the MPB. Additional individuals may be added as determined by the BAH and the EDMCS/MN.



**ESTABLISHMENT OF THE EMERGENCY RESPONSE COMMITTEE (ERC):** From the EDMCS/MN, a subset of members will become the ERC and will serve as an advisory committee to the authority in charge of emergency response in the event of an outbreak. This group will include, at a minimum, members that represent the Minnesota pork industry, BAH, MDA and the standing Incident Commander (IC) assigned to respond to and provide technical support and information regarding a disease emergency event. The ERC will be notified immediately when an emergency disease diagnosis is made. The ERC will provide the operational guidance and initial recommendations to the authority in charge. For example, the ERC may provide advice to the IC regarding scientifically sound protocols for containment of the disease or the prioritization of resources that should be deployed.

**INITIAL COMMITMENT/ACTIVITIES:** The EDMCS/MN met frequently by conference call, webinar, and in person in July, August, and September 2019 in preparation for the USDA ASF Functional Exercise to establish the Minnesota ASF Plan, contact information, communications and resources available to functionally exercise an ASF response. EDMCS/MN members will prioritize the action areas listed below and establish subcommittees, task forces, or working groups within the EDMCS/MN to address these critical activities of a swine disease emergency response:

1. Communications
2. Surveillance and Diagnostics
3. Information management including epidemiological investigations, mapping, and tracing
4. Health, safety, and welfare of pork producers, veterinarians, disease responders, and animals
5. Biosecurity and quarantine
6. Permitted movement control as part of risk-based disease management and pork production strategies
7. Mass depopulation, euthanasia, and disposal
8. Cleaning and disinfection
9. Wildlife management and vector control
10. Regionalization for interstate and/or international trade

**ONGOING COMMITMENT/ACTIVITIES:** The EDMCS/MN will meet at least bi-annually in person to update the Minnesota emergency swine disease response plan, contact information especially for communications, and resource availability. The ERC will meet on an as-needed basis. Emergency exercises will be conducted at least every 5 years. The BAH will look to the members of the EDMCS/MN to coordinate meetings for the discussion, development, and implementation of plans to control and/or eradicate other emergency swine diseases that could result in serious economic losses to the Minnesota pork industry.

**RECOMMENDED MEMBERS:**

- Producers from Integrated/Semi-Integrated Systems, Independent Farms (all sizes), and Niche farms
- Packers and Processors from Minnesota and region as appropriate
- Swine Veterinarians from Production Companies, Veterinary Clinics, and Consulting Practices
- State and Federal Regulatory Agents (such as MDA, BAH, USDA, and others per the disease and phase of the outbreak)
- Industry Group representatives from MPB and NPB as appropriate
- Academicians from U of MN -VDL, CVM, Extension



**EMERGENCY DISEASE MANAGEMENT COMMITTEE FOR SWINE IN MINNESOTA (EDMCS/MN)**

# Grants Available for Updates to Livestock Operations

## APPLICATIONS ACCEPTED THROUGH DECEMBER 18, 2019

St. Paul, MN: Minnesota livestock farmers and ranchers seeking to improve their livestock operations are encouraged to apply for the Agricultural Growth, Research and Innovation (AGRI) Livestock Investment Grant program. The Minnesota Department of Agriculture (MDA) anticipates awarding up to \$768,000 using a competitive review process.

The AGRI Program's Livestock Investment Grants encourage long-term industry development in Minnesota's \$7 billion livestock industry through investment in facilities, infrastructure, and equipment. The program encourages new farmers and generational transitions in order to sustain the

livestock industry in the state. Funding for the grants was established through the AGRI Program to advance Minnesota's agricultural and renewable energy industries.

Applicants may apply for up to 10 percent of their project's total cost. Grant awards can range in size from \$400 to \$25,000. Each livestock operation is eligible to receive a lifetime maximum of \$50,000 from this grant program. To be eligible for reimbursement by this grant, you must

be invoiced and pay for all project materials and services between January 1, 2020 and June 30, 2021.

We must receive your proposal no later than 4 p.m. CST on Wednesday, December 18, 2019 for it to be considered. We encourage you to use our online application.

If you cannot apply online, you can fill out the application at the end of the Request for Proposals, which can be found on the AGRI Livestock Investment website.

### Contact:

Larry Schumacher, MDA Communications  
651-201-6629  
larry.schumacher@state.mn.us



## IS YOUR MILL WORKING FOR YOU? OR IS IT THE OTHER WAY AROUND?

↓  
DOWNTIME COSTS MONEY. FORTUNATELY,  
OUR MILLS ARE DESIGNED FOR EASY  
MAINTENANCE AND ROLL CHANGES TO KEEP  
YOUR OPERATION RUNNING. NEED ON-SITE SERVICE?  
OUR EXPERIENCED TEAM IS STANDING BY 24/7.  
↑



→ [rmsroller-grinder.com](http://rmsroller-grinder.com) // contact [sales@rmsroller-grinder.com](mailto:sales@rmsroller-grinder.com)  
888-283-9337 // 605-368-9007





# Grower**SELECT**<sup>®</sup>

## It all comes down to reliable.

When it comes to production equipment, reliability is what matters most.

At Hog Slat, we understand that better than anyone else.

We've built our business on supplying you with the best products,  
backed by the best warranties, and serviced by local stores.

**Give us a call for a quote on your next project.**



[www.hogslat.com](http://www.hogslat.com) | 800-949-4647

**Redwood Falls**  
36281 US Hwy 71  
866-929-1350

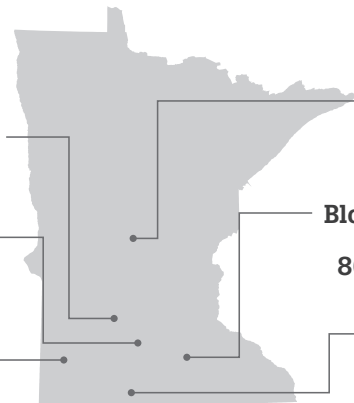
**Mankato**  
53908 208th Lane  
855-588-8733

**Pipestone**  
810 Industrial Road  
877-562-4203

**Sauk Centre**  
519 Lincoln Road  
320-351-9202

**Bloomington**  
633 6th St. SE  
866-705-1655

**Fairmont**  
710 Cory Lane  
866-461-4448



# MEET BOARD MEMBER Galen Johnson

## Tell us about yourself and your farm.

I was raised on a family dairy farm in Southeast Minnesota. When I was old enough to start an FFA project, I convinced my Dad to convert two barns used for chickens and calves to pig barns, I then purchased two Yorkshire sows. I went to college and that ended my first pig business.

In 1989 I returned to Minnesota and joined Wilbert Kern as a partner forming Grandview Hogs. Grandview Hogs primarily focused on a 2,500-head sow unit plus some additional operations. We have recently sold our sow unit and are presently finishing market pigs.

I've been married 43 years to an understanding spouse, and we raised three sons together.

## Why did you decide to run for a position on the Minnesota Pork Board?

My decision to seek a position on the MPB was based on a couple points; I believe in the necessity and value which the MPB brings to the pork producers in Minnesota, and I'm willing to contribute thru my efforts toward the valuable programs the MPB supports.

## What do you most enjoy about being an Executive Board member?

After being elected to the MPB, I quickly learned that there are many programs of support and promotion which I had not been aware of. Helping make the decisions on how the MPB can best position itself for promotion, research, and multiple support programs for producers is gratifying. As society and technology continually change, I'm impressed with the ability of the MPB staff to change, adapt, and be willing to learn from past successes and not so successful projects.

I encourage all persons who work in the pork industry to get involved. Any pork outing I've been involved with such as oink outings, state fair, and the ambassador program selection have all been personally rewarding.

This is our industry; we are good stewards and we produce a safe and nutritious food product.

## In your opinion, what is the biggest challenge facing today's pig farmers in Minnesota?

The Minnesota pork industry will always face old and new challenges. Through sound and informed programs the MPB can help turn challenges into opportunities. Along with zoning, environmental, and fake meat challenges, I think ensuring fair and transparent price discovery is going to be essential for the prosperity of Minnesota pork producers.



NADA 141-336

Approved by FDA.

## **AVIVOSIN<sup>®</sup>** (62.5% w/w Tylvalosin as Tylvalosin Tartrate) Water Soluble Granules

Use only as directed.  
For use only in the drinking water of pigs.  
Not for use in lactating or pregnant females, or males and females intended for breeding.  
**CAUTION:**  
Federal law restricts this drug to use by or on the order of a licensed veterinarian.  
**PRODUCT DESCRIPTION:**  
Avivosin<sup>®</sup> (tylvalosin tartrate) Water Soluble Granules is a water soluble granular powder for oral use by administration in the drinking water.  
**ANTIBIOTIC CLASSIFICATION:**  
Tylvalosin, the active ingredient in Avivosin<sup>®</sup> Water Soluble Granules, is a macrolide antibiotic.  
**INDICATIONS:**  
**For Swine:**  
Control of porcine proliferative enteropathy (PPE) associated with *Lawsonia intracellularis* infection in groups of swine in buildings experiencing an outbreak of PPE.  
Control of swine respiratory disease (SRD) associated with *Bordetella bronchiseptica*, *Haemophilus parasuis*, *Pasteurella multocida*, and *Streptococcus suis* in groups of swine in buildings experiencing an outbreak of SRD.  
**DOSAGE AND ADMINISTRATION:**  
Prepare drinking water medicated with 50 parts per million (ppm) tylvalosin. Administer continuously in drinking water for five (5) consecutive days.  
Galvanized metal adversely affects the stability of tylvalosin in water and may reduce the effectiveness of the product. Prepare a fresh batch of medicated stock solution or medicated drinking water daily.  
**MIXING DIRECTIONS:**  
**Direct Mixing:**  
When mixing the product directly into the drinking water system, the contents of the sachet should be sprinkled onto the surface of the water and mixed slowly and thoroughly for at least 3 minutes. Prepare a fresh batch of medicated drinking water daily.  
**Stock Solution:**  
When preparing a stock solution, the recommended concentration is one 40-gram sachet per US gallon, or one 160-g sachet per four (4) US gallons or one 400-gram sachet per 10 US gallons. Sprinkle sachet contents onto the surface of the water of the stock solution and mix slowly and thoroughly for at least 10 minutes. Use the stock solution for dilution into the drinking water system as soon as it is prepared. Add one (1) fluid ounce of this stock solution per 131 fluid ounces (1 US gallon, 3 fluid ounces) of drinking water to provide a final concentration of 50 ppm. If using an automatic water proportioner, set the flow rate to add stock solution at a rate of 1 fluid ounce per 131 fluid ounces of drinking water (1:131). Prepare a fresh batch of medicated stock solution daily.  
**ANTIBACTERIAL WARNINGS:**  
Use of antibacterial drugs in the absence of a susceptible bacterial infection is unlikely to provide benefit to treated animals and may increase the development of drug-resistant pathogenic bacteria.  
**USER SAFETY WARNINGS:**  
**NOT FOR USE IN HUMANS.**  
**KEEP OUT OF REACH OF CHILDREN.**  
May cause skin irritation. Tylvalosin tartrate has been shown to cause hypersensitivity reactions in laboratory animals. People with known hypersensitivity to tylvalosin tartrate should avoid contact with this product. In case of accidental ingestion, seek medical advice. When handling Avivosin<sup>®</sup> Water Soluble Granules and preparing medicated drinking water, avoid direct contact with the eyes and skin.  
The Safety Data Sheet contains more detailed occupational safety information.  
**PRECAUTIONS:**  
Not for use in lactating or pregnant females, or males and females intended for breeding. The effects of tylvalosin on swine reproductive performance, pregnancy, and lactation have not been determined.  
**ADVERSE REACTIONS IN ANIMALS:**  
No adverse reactions related to the drug were observed during clinical or target animal safety trials. To report suspected adverse reactions in animals, contact the ASPCA Animal Product Safety Service at 1-800-345-4735 or the FDA at 1-888-FDA-VETS.  
**EFFECTIVENESS: Swine**  
**Control of Porcine Proliferative Enteropathy (PPE):**  
A multi-location challenge model study was conducted to confirm the effectiveness of Avivosin<sup>®</sup> Water Soluble Granules for the control of PPE associated with *Lawsonia intracellularis*. Pigs were challenged by intragastric gavage with a mucosal homogenate containing a North American isolate of *Lawsonia intracellularis* isolated in 2005 that induces representative disease in challenged pigs. When at least 15% of the study pigs were showing signs of infection based on abnormal fecal scores, pigs were provided water containing tylvalosin at an inclusion rate of 50 ppm for five consecutive days, or were provided non-medicated water. Effectiveness was evaluated using clinical scores (pig demeanor score, abdominal appearance score, and fecal score) and clinically-validated gross PPE lesion scores. A conclusion of the effectiveness of 50 ppm tylvalosin for the control of PPE was determined based on a statistically significant ( $p = 0.0103$ ) improvement in the clinically-validated gross PPE lesion scores in the 50 ppm tylvalosin-treated group compared to the non-medicated group.  
**Control of Swine Respiratory Disease (SRD):**  
The effectiveness of Avivosin<sup>®</sup> Water Soluble Granules for the control of swine respiratory disease (SRD) associated with *Bordetella bronchiseptica*, *Haemophilus parasuis*, *Pasteurella multocida* and *Streptococcus suis* was investigated in a natural field infection study conducted in the United States (three study sites) and Canada (one study site). Day 0 was defined when at least 15% of the candidate pigs were deemed clinically affected with SRD (moderate or severe respiratory score, moderate or severe depression score, and rectal temperature greater than or equal to 104.0 °F). On Day 0 a total of 980 pigs were enrolled and randomly assigned to a tylvalosin-treated group (50 ppm tylvalosin in drinking water for 5 consecutive days) or a non-medicated control group. Treatment success was evaluated on Day 7 and was defined as a pig with normal or mild respiratory score, normal or mild depression score, and rectal temperature less than 104.0 °F. The proportion of pigs meeting the definition of treatment success was numerically higher in the tylvalosin-treated group (48.5%) compared to the proportion of pigs meeting the definition of treatment success in the non-medicated control group (41.6%), and the observed difference was statistically significant ( $p=0.035$ ).  
**ANIMAL SAFETY: Swine**  
Margin of safety: Avivosin<sup>®</sup> Water Soluble Granules given orally in drinking water at 0, 50, 150 and 250 ppm tylvalosin (0, 1X, 3X and 5X the labeled dose, respectively) to 6 healthy pigs per treatment group over 15 days (3X the labeled duration) did not result in drug-induced clinical signs, gross pathologic lesions, histopathologic lesions or clinically-relevant clinical pathology abnormalities.  
For technical assistance or to obtain a Safety Data Sheet, call Pharmgate Animal Health at 1-800-380-6099. To report suspected adverse drug events, contact the ASPCA Animal Product Safety Service at 1-800-345-4735 or FDA at 1-888-FDA-VETS.

Avivosin<sup>®</sup> is a registered trademark of ECO Animal Health Ltd.

 **Pharmgate**  
ANIMAL HEALTH [Pharmgate.com](http://Pharmgate.com)



# A Cost-Effective, Low-Stress Injection Site



## Isn't an Injection Site

Protect your pigs' health and performance – and your profits – with fast, flexible Aivlosin® Water Soluble. Aivlosin® delivers the potent, latest-generation macrolide tylvalosin. It achieves peak blood levels in  $\leq 2$  hours for effective control of SRD and ileitis.

Save time, stress and expense with Aivlosin® Water Soluble compared to injectable treatment alternatives. Treat with no needles, less stress, and no withdrawal period.

Ask your veterinarian about Aivlosin® Water Soluble or visit [pharmgate.com](http://pharmgate.com).

**AIVLOSIN®**  
Water Soluble Granules (tylvalosin)

[pharmgate.com](http://pharmgate.com) 1(800) 380-6099



**Important Safety Information:** Available under prescription only. AIVLOSIN is indicated for the control of swine respiratory disease (SRD) associated with *Bordetella bronchiseptica*, *Haemophilus parasuis*, *Pasteurella multocida* and *Streptococcus suis*, or porcine proliferative enteropathy (PPE) associated with *Lawsonia intracellularis*, in groups of swine in buildings experiencing an outbreak of either disease. For use only in drinking water of pigs. Not for use in lactating or pregnant females, or males and females intended for breeding. People with known hypersensitivity to tylvalosin tartrate should avoid contact with this product. When used in accordance with label directions, no withdrawal period is required before slaughter for human consumption.

©2019 Pharmgate Animal Health, LLC. Aivlosin is a registered trademark of ECO Animal Health Ltd., London, U.K.



1096-0819

## 2019 EXECUTIVE BOARD

### President:

**JoDee Haala**

Sleepy Eye

### Vice President:

**Brad Hennen**

Ghent

### Secretary:

**Myrna Welter**

Stewartville

**Reuben Bode**

Courtland

**Chris Compart**

Nicollet

**Meg Freking**

Jackson

**Dan Helvig**

Truman

**Brian Johnson**

Walnut Grove

**Galen Johnson**

Dodge Center

**Wanda Patsche**

Welcome

**Brian Schwartz**

Sleepy Eye

**Angie Toothaker**

Granada

**National Pork Board**

**Pat FitzSimmons**

Dassel

**Minnesota Pork Board**

151 St. Andrews Court, Suite 810

Mankato, MN 56001

(507) 345-8814

(800) 537-7675

mnppork@mnppork.com

www.mnppork.com

### Staff

**David Preisler**

Chief Executive Officer

**Jill Resler**

Chief Operating Officer

**Colleen Carey**

Administrative Assistant

**Katelyn Gradert**

Director of Communications

**Vicki Kopischke**

Accounting/HR Generalist

**Lauren Servick**

Director of Marketing and  
Public Policy Engagement

**Pam Voelkel**

Director of Events and Promotions

**Kyra**

Intern

**Rachel Sonnabend**

Intern

## PORK PLEASE

### TUSCAN-STYLE PORK LOIN

*Whether you're dining with a big group of friends or family this holiday season, this dish is simple to whip up and will certainly impress your guests! Packed with protein and loads of flavor, this Tuscan-style pork loin is the perfect meal to make this holiday season.*

### INGREDIENTS

- 1 (2½ lb.) boneless center-cut pork loin roast, trimmed
- 1 head garlic, top sliced off
- 1/3 cup olive oil + 1 Tbsp.
- 2 oz. roughly chopped prosciutto
- Zest and juice of one lemon
- 1 Tbsp. chopped fresh rosemary
- Salt and ground pepper

### STEPS

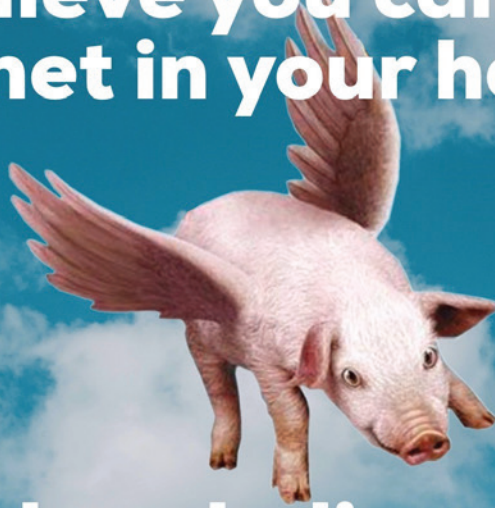
- Preheat oven to 300 degrees. Place garlic on foil, drizzle with 1 Tbsp. oil. Wrap garlic and bake on a sheet pan until soft, about 45 minutes. Squeeze garlic flesh from the head into a small bowl. Divide in half.
- Heat 1/3 cup olive oil in a skillet. Add prosciutto, lemon zest and pepper flakes cooking over medium heat until prosciutto begins to render but does not brown or crisp (3-5 minutes.) Add rosemary and cook another 30 seconds.
- Strain mixture through a fine mesh strainer, reserving oil. Add half of the roasted garlic and 1 Tbsp. olive oil to prosciutto mixture and stir. Allow prosciutto mixture to cool slightly.
- Position roast fat side up. Cut top 1/3 of roast horizontally, stopping 1/2 inch before the edge. Open top one-third flap. Starting from the center, keeping knife level with first cut, slice bottom 2/3 portion in half horizontally, stopping about 1/2 inch before the edge. Open this flap. Cover with plastic wrap and pound evenly. Season pounded pork with salt and pepper. Evenly spread inside of roast with the prosciutto-garlic mixture, leaving 1/4 inch border on all sides. Starting from the short end, Roll up pork completely and secure with butcher twine in 1-inch intervals.
- Mix reserved cooking oil with remaining half of roasted garlic and stir. Set aside for serving.
- Refrigerate roast covered for 1 hour. Bring roast out to sit at room temperature 15 minutes before cooking.
- Heat 2 Tbsp. reserved oil in a skillet over medium-high heat. Carefully brown pork on all sides (around 6-8 minutes total). Preheat oven to 275. Set wire rack in a rimmed baking sheet and grease with cooking spray. Set roast fat side up on a prepared rack and cook for 1 1/2 to 2 hours, or until meat registers 135 degrees. Remove roast from oven and let rest for 20 minutes.
- Whisk lemon juice, remaining half roasted garlic and reserved oil. Salt to taste.
- Slice roast and serve with vinaigrette.



Find the recipe and video link online: <http://www.mnpork.com/porkplease/tuscan-style-pork-roast/>



# Don't believe you can get quality internet in your hog barn?



## We'll make a believer out of you.

- *Remote access to your ventilation controller*
- *Secure and reliable internet connection*
- *Critical alarms delivered via voice, email, or text.*



**SAFE HARBOR**  
TECHNOLOGIES

**safeharbortech.net • 833-748-3246**

A close-up photograph of a white control panel. A prominent green circular button is visible. In the background, the word 'EDGE' is embossed in large, dark letters on a textured surface. A red oval logo with a white star and the letters 'AP' is overlaid on the image.

# KEEP CONTROL

Maintain complete control during load-out, cleaning and restocking with AP's scenario feature for EDGE®. Simple system changes with the press of a button.

**PROVEN & DEPENDABLE™**

**AGCO**  
Your Agriculture Company

Copyright © 2019 AGCO Corporation \*AP is a part of GSI, a worldwide brand of AGCO

**AUTOMATEDPRODUCTION.COM**

# HEINOLD

Buy cull sows, pigs, boars daily  
On-farm pickup with clean, disinfected trailers

Knute Meneely, Manager  
Junction of Hwys. 60 & 71, Windom, MN  
Barn: (507) 831-3385 Mobile (507) 920-9205



ALARM SYSTEMS INC.

SECURITY & ENVIRONMENTAL  
MONITORING

CONFINEMENT ALARMS  
For Over 25 Years

- NEW Offsite Temperature Viewing
- Professional Monitoring
- 24 hour Customer Service
- Environmental Sensors: Temperature, Power, Water, Fire, Unauthorized Entry
- Cellular Communication
- Wireless Systems
- Camera Systems
- Door Control Systems

Repairs  
the Old.

Installs  
the New.

Protects  
Your  
Assets.

(888) 482-4884 (507) 524-4194

Mapleton MN 56065

email: info@hawkalarm.net www.hawkalarm.net

# Is foam taking up space in your tanks?

Call NOW! Solutions for foaming  
during pump-out and persistent foam in pits.



Call today for a consultation!  
888-231-1002 • PitCharger.com



BACK ISSUES  
AVAILABLE ONLINE

## PORK CHECKOFF REPORT



www.mnpork.com  
Click on  
Farmers Resources



# L Lange Ag Systems, Inc. www.LangeAgSystems.com

## ■ Full Line of Repair Parts & Service

## ■ Livestock Equipment

- |                              |                            |                       |
|------------------------------|----------------------------|-----------------------|
| ■ Ventilation Fans/Parts     | ■ Feed Delivery/Parts      | ■ Waterers/Plumbing   |
| ■ Ventilation Controls/Parts | ■ Feeders                  | ■ Pit Fan Transitions |
| ■ Inlets & Chimneys          | ■ Gating                   | ■ Medicators/Parts    |
| ■ Curtains/Parts             | ■ Farrowing Crates         | ■ Much More!          |
| ■ Heaters/Parts              | ■ Flooring Systems         |                       |
| ■ Filtration Systems         | ■ PVC Planking             |                       |
| ■ Feed Bins                  | ■ Misting & Soaker Systems |                       |



## ■ Construction - New & Remodel

- |           |             |             |             |
|-----------|-------------|-------------|-------------|
| ■ Nursery | ■ Gestation | ■ Farrowing | ■ Finishing |
|-----------|-------------|-------------|-------------|

1105 North State Street (Behind Pizza Ranch)  
Fairmont, MN • 507.399.2178

193 County Road 9 NE  
Willmar, MN • 320.231.1470