



PORK CHECKOFF REPORT

JANUARY FEBRUARY 2023



MPB Receives *Key to the House Award* from Ronald McDonald House Charities, Upper Midwest



Ronald McDonald House Charities®
Upper Midwest

Minnesota Pork CEO, Jill Resler, accepted the Key to the House award on behalf of Minnesota’s pig farmers at the Celebrate Love Gala for the Ronald McDonald House Charities, Upper Midwest (RMHC-UM) on October 8, 2022, at the Minneapolis Renaissance Hotel, The Depot.

The Ronald McDonald House Charities, Upper Midwest hosted its gala for the first time in two years since the COVID-19 pandemic. The gala celebrates the families who belong to the RMHC-UM and the many partners who help support the charity. Several awards were presented throughout the night, with the final award of the evening, the Key to the House Award, being awarded to Minnesota’s over 3,000 pig farmers.

“This [award] is given to an organization that has made a significant impact on the house in a short period of time,” said Mike Burbach, chair of the RMHC-UM board of directors. “The Minnesota



(Continued on page 2)

L to R: Maddie Hokanson, Jill Resler, and Mary Langhorst
Minnesota pig farmers, Maddie Hokanson and Mary Langhorst, joined Resler at the 2022 Gala to accept the Key to the House award.



Non-profit
US Postage
PAID
Owatonna, MN
55060
Permit #110

Minnesota Pork Board
151 Saint Andrews Court, Suite 810
Mankato, MN 56001
507.345.8814
ADDRESS SERVICE REQUESTED

FEBRUARY 20

Annual Meetings

MPB: 12:30 – 2:30 p.m.
MPPA: 3:00 – 5:00 p.m.
Mayo Clinic Event Center
Reception Hall
Mankato, Minnesota

FEBRUARY 20

Awards Reception

Mayo Clinic Event Center
Banquet Hall West
Mankato, Minnesota
5:30 – 8:30 p.m.
Invitation Only

FEBRUARY 21-22

Minnesota Pork Congress Trade Show

Mayo Clinic Event Center
1 Civic Center Plaza
Mankato, Minnesota

FEBRUARY 22

SIP & Partner Breakfast

7:30 a.m. Breakfast
8:00 – 9:00 a.m. Keynote Speaker
Member-exclusive event

MARCH 14

PQA+ & TQA – Mankato

Minnesota Pork Board Office
151 Saint Andrews Court Suite 810
Mankato, Minnesota 56001
PQA+: 9:00 a.m. – 12:00 p.m.
TQA: 1:00 – 4:00 p.m.
*Pre-register: colleen@mnppork.com
or 1-800-537-7675*

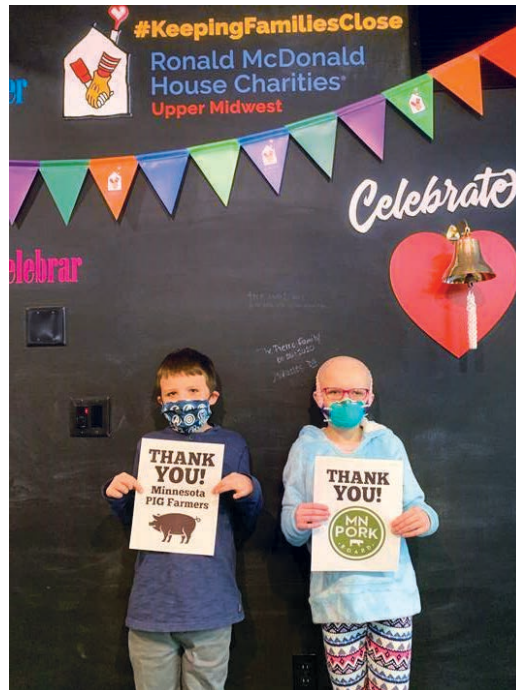
JUNE 14

PQA+ & TQA – Hutchinson

Mcleod County Fairgrounds
Extension Office Meeting Room
840 Century Ave.
Hutchinson, Minnesota
PQA+: 9:00 a.m. – 12:00 p.m.
TQA: 1:00 – 4:00 p.m.
*Pre-register: colleen@mnppork.com
or 1-800-537-7675*



MPB Receives Key to the House Award from Ronald McDonald House Charities, Upper Midwest *(Continued from page 1)*



Pork Board certainly meets that description having made significant financial contributions to support the meal program, hosting a successful fundraiser, providing thousands of snack bags for families and hospital staff, and more.”

Despite some difficult years during the COVID-19 pandemic, the Minnesota Pork Board (MPB) continues to strengthen their partnership with the RMHC-UM in order to continue supporting families in need who live outside of their home while their child receives lifesaving medical treatments. RMHC-UM serves three meals a day, seven days a week, to families utilizing the home, and MPB’s donations have helped provide high-quality pork protein options every day.

“From BLTs to pork chops and from pulled pork sandwiches to lasagna, Minnesota pig farmers have provided nutritious meals to Ronald McDonald House Charities, Upper Midwest families since 2020,” said Jill Resler, CEO of the Minnesota Pork Board. “Being engaged with the Ronald McDonald House Charities, Upper Midwest has enabled Minnesota pig farmers to support families in need and meet other generous leaders and organizations from across Minnesota that share in the purpose and believe in the impact that the Ronald McDonald House Charities, Upper Midwest is having.”

Minnesota pig farmers belong to a strong community of people who continue to raise flavorful and nutritious pork, while also providing the best care for pigs, people, and the planet. They also belong to a community that never neglects to give back and make a greater impact through their support of charities like the RMHC-UM.

“During times of adversity, the food and fellowship shared around a table can provide certainty and comfort,” Resler said. “Minnesota pig farmers are humbled to play a small part in supporting the work that the RMHC-UM is doing 24 hours a day, 7 days a week, 365 days a year.”

“We are so grateful for our partnership with the Minnesota Pork Board,” said Jill Evenocheck, President and CEO of Ronald McDonald House Charities, Upper Midwest (RMHC-UM). “Their generous donations directly enable us to put food on the table for families with seriously ill and injured kids. Providing a comfortable and safe home away from home is central to our mission, and the Pork Board’s gifts play a big part in ensuring we can do just that.”



Join us at the 2022 MINNESOTA PORK BOARD ANNUAL MEETING

MONDAY, FEBRUARY 20, 12:30 P.M.
MAYO CLINIC EVENT CENTER, MANKATO, MN

Preregister to colleen@mn-pork.com



A complimentary lunch will precede the MPB Annual Meeting beginning at 11:30 a.m. All Minnesota pig farmers who pay into the Pork Checkoff are stakeholders in the Minnesota Pork Board (MPB) and are encouraged to attend the Annual Meeting. A Joint Session with the Minnesota Pork Board (MPB) and Minnesota Pork Producers Association (MPPA) to discuss bylaw amendments, organizational updates, and executive board member elections at 12:30 p.m. Following the joint session, the MPB meeting will resume.

See You at the 2023 MINNESOTA PORK CONGRESS!

Join the Minnesota Pork Producers Association (MPPA) at the 2023 Minnesota Pork Congress held in Mankato, MN. The event is scheduled to take place on February 21 and 22 at the Mayo Clinic Event Center, where pork producers, allied industry, and stakeholders will convene. Register online here: <https://www.mnporkcongress.com/registration/>

Strategic Investment Partners (SIP) and MPPA members receive complimentary registration to Minnesota Pork Congress.

The annual Awards Reception, featuring the 2023 Minnesota Pork award winners, will be held prior to Pork Congress on Monday, February 20, 2023. The Awards Reception is an invitation-only event with RSVP's required.



PWA
Solutions
www.pwaire.com

SEE THE DIFFERENCE

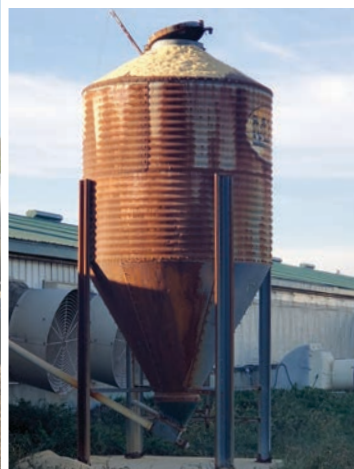
VISIBLE FEED LEVEL | WON'T DENT | UP TO 18 TON CAPACITY
CORROSION RESISTANT FOR LONG LIFE

MADE IN USA

605.925.4868 | www.pwaire.com | www.Prairie-Pride.com



THE CHOICE IS CLEAR



Local action, global influence: the future of pork.

Dear friends and partners,

The future of pork production requires a constant, focused effort to protect our livelihoods.

Protecting producers' freedom to operate is what the National Pork Producers Council (NPPC) does each day as the global voice for the U.S. pork industry. The success of the NPPC and affiliate state pork associations depends on the participation and shared vision of our stakeholders to secure a strong future for everyone in the pork industry.

The Strategic Investment Program (SIP) remains the largest source of funding for NPPC and is essential for state pork organizations' policy efforts. Forty percent of SIP funds are returned to your state organization to support grassroots efforts.

We are grateful for the action taken by delegates at the annual National Pork Industry Forum in March 2022. They voted to increase the SIP rate to 15 cents, from 10 cents per \$100 of value for each live hog sold, effective no later than Jan. 1, 2023. The change will work in conjunction with a 5-cent reduction in the mandatory Pork Checkoff rate. This shift was one of five recommendations made by the producer-led 2021 Pork Industry Visioning Task Force.

Challenges facing the pork industry are coming from many angles. With challenge comes opportunity. A strategically considered budget increase allows us to tackle challenges in new ways. A reliable source of revenue allows us to be more proactive in how we tackle issues in Washington, D.C., in the future and beyond.

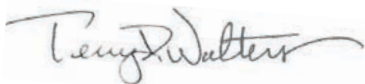
It is important to understand mandatory Pork Checkoff dollars cannot be used to influence legislative, regulatory or trade policy. NPPC and state organizations rely on SIP to represent important policy issues at the national and grassroots level.

SIP funds allow NPPC to fight for reasonable legislation, regulation and development of export market opportunities. SIP is critical to ensure we have an aggressive voice to address these challenges and create opportunities for investors.

We want to thank current SIP investors — your involvement and support is critical to our organization.

To those who are not investors, we encourage you to reach out to NPPC at invest@nppc.org or visit www.nppc.org/invest for more information. We believe you will see that an investment in SIP is a wise choice for your business.

Respectfully yours,



Terry Wolters
NPPC President



Bryan Humphreys
NPPC CEO



**Strengthen your
future. Invest in
SIP today.**

www.nppc.org/invest

**To be your
voice, we need
your voice.**

John Anderson,
Minnesota Pork
Producer and
SIP Investor

“We invest in the Strategic Investment Program (SIP) to have a voice on critical policy issues impacting our farm. As a medium-sized producer, we don’t have the time or capital to individually address many of the issues the National Pork Producers Council (NPPC) and the Minnesota Pork Producers Association (MPPA) take on for the pork industry. By investing in SIP, we expand our reach through a unified voice to protect our livelihood and maintain a viable industry for the future. Whether it is educating newly elected leaders, countering activist information, expanding trade markets or fighting through the courts, our pork organizations give us a strong opportunity to influence issues on state, national and international levels. I would encourage all pork producers to invest in SIP and get engaged with NPPC and MPPA. You get way more out of it than what you put in.”





Become U.S. SHIP Enrolled!

Biosecurity, Traceability, and Disease Surveillance



The US Swine Health Improvement Plan (SHIP) is modeled after the National Poultry Improvement Plan (NPIP), an effort of collaboration between industry, state, and federal partners that has been in place since 1935. US SHIP is intended to provide a similar program for certifying the health status of swine across participating farm sites, supply chains, states, and regions and is initially focused on African Swine Fever (ASF) and Classical Swine Fever (CSF).

The certification aims to mitigate risks of disease introduction through certifications recognized across participating states. The program is centered on disease prevention and demonstration of freedom of disease outside of control areas in support of animal health, commerce, and trade. US SHIP is designed to be applicable across the full-spectrum of US pork industry participants from the small show pig farmers to the large commercial producers and packing facilities.

Minnesota has committed to participating in US SHIP and MPB encourages all swine producers to enroll their production and packing site(s)

in this program. Industry and Minnesota representatives attended the inaugural US SHIP House of Delegates in August 2021 and approved the initial requirements for certification in the program.

The benefits of US SHIP enrollment include:

- Strengthened ASF/CSF preparedness (prevention, response and recovery) for Minnesota
- Establish a uniform biosecurity, traceability, sampling/testing approach across participating states in “peacetime” as well as “wartime.”
- Participation in a collaborative industry (producers/packers), state, and federal program in which producers can help establish appropriate standards for health certification.

Enrollment in US SHIP is by site and fairly straightforward:

- Complete the enrollment form (either single-premise or multi-premise form).
- Complete the biosecurity enrollment survey provided after you submit your enrollment form.
- Show ability to provide 30 days of swine movement records in an electronic format





ISG

Expertise


- Construction Administration
- Drone Services
- Engineered Pit Plans
- Environmental Assessment Worksheet
- Feedlot Permits
- Land Surveying
- Site Design
- Storm Water Pollution Prevention Plan

MAXIMIZING PRODUCTIVITY +

Minimizing Operational Distractions

Architecture + Engineering + Environmental + Planning | ISGInc.com | 507.387.6651 | [f](#) [t](#) [in](#) [@](#) [v](#)

Hog Barns that Work




Est. 1955

PALS

Supplier Of Choice

3735 1st Avenue West
Willmar MN 56201
1-800-328-8842 / 320-235-8860

CARBON INTENSITY




Propane's carbon footprint is smaller than almost any alternative.

DIESEL		105
EV		93
NATURAL GAS		87
GASOLINE		86
PROPANE/NG		79
RENEWABLE LPG	45	

MN Propane Association
763-633-4271
www.discoverpropanemn.com

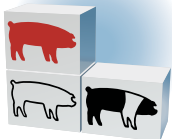
CARBON INTENSITY (g CO2/MJ): 0 50 100 →

Tried & True



Compart program offers:

- Duroc, York, Landrace boars and open gilts
- Duroc, York and Landrace semen
- PRRS naïve herds and boar stud
- 50+ years of genetic selection
- 25+ years of scan work for genetic production traits and intramuscular fat.



Compart's Boar Store, Inc.
Nicollet, MN • 877-441-2627

Advancing U.S. Pork Sustainability and Market Value

In September 2022, the Advancing U.S. Pork Sustainability and Market Value grant submitted by National Pork Board (NPB) and six collaborating organizations was awarded \$20 million through USDA's Partnership for Climate Smart Commodities program. The grant program is designed to increase the sustainability of U.S. pork products by advancing climate smart agriculture practices in Iowa, Minnesota and Missouri. NPB conducts research, education, and promotion on behalf of the country's 60,000-plus pig farmers. This work to collect on-farm data and support-implementation of new practices will help promote pork to consumers who today, are increasingly expecting sustainably raised food.

The strength of this project is rooted in the expertise, diversity and reach of its partners, including National Pork Board, Nestlé, Sustainable Environmental Consultants (SEC), Ducks Unlimited, Inc., Trust in Food (Farm Journal, Inc.), Farm Credit Council and Millborn Seed. Six entities provided letters of support, including: Iowa Pork Producers Association, Minnesota Pork Board, Missouri Pork Association, Iowa Corn Growers Association, Missouri Corn Growers Association, and Iowa Soybean Association.

The grant will support the completion of We Care® on-farm reports by producers, and incentivize the adoption of climate-smart practices that are recommended through the reporting process. No two farms are the same, which is why the project team will look to implement practices tailored to growers' needs and report progress toward meaningful climate benefits. Practices suitable to the region and production systems include cover crops, livestock integration (in cover crops), reduced or no tillage, reduced fertilizer application, manure management and edge-of-field grass buffers.



75%
less land



7.7%
fewer carbon emissions



25%
less water



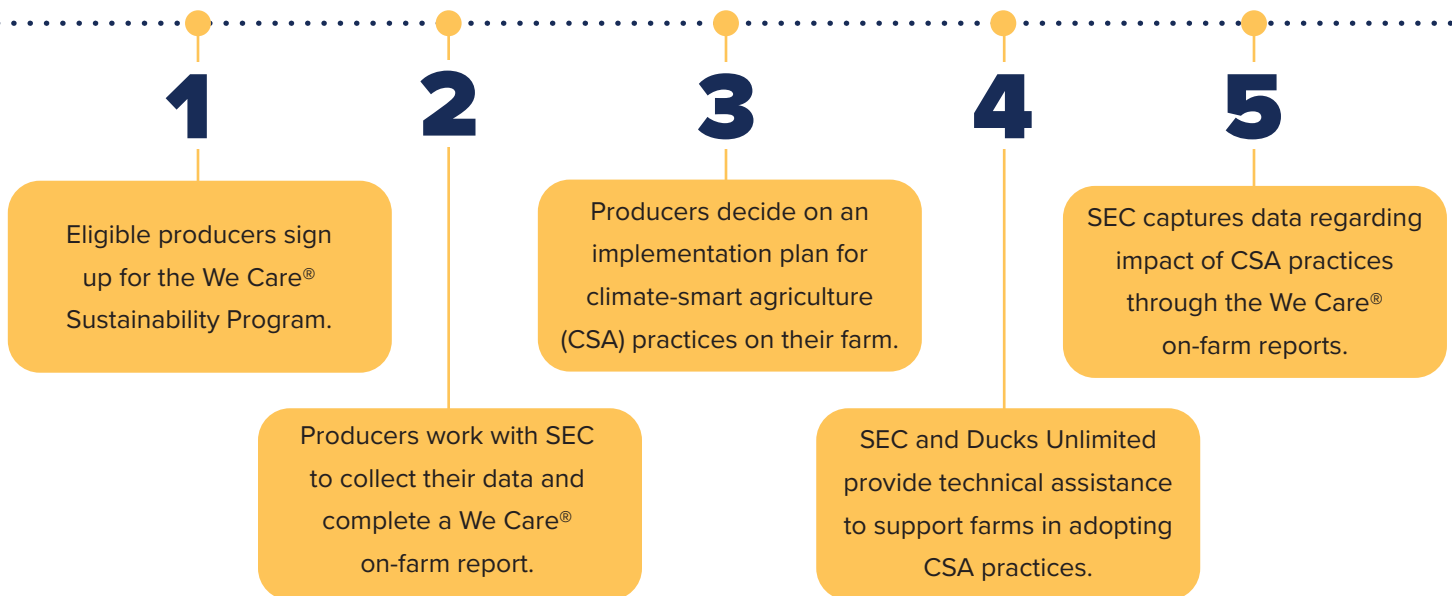
7%
less energy

Putnam et al., 2018

Achieving meaningful climate outcomes is critical to maintaining consumer demand for pork. More than half of U.S. consumers have made some modest changes in their purchasing decisions to be more sustainable, according to the 2021 Global Sustainability Study (Simon-Kutcher & Partners, 2021). While the pork industry has a strong history of improving sustainability, using 75% less land, 25% water, 7% less energy and 7.7% fewer carbon emissions over the past six decades (Putnam et al., 2018), pig farmers also strive to continuously improve.

With nearly 50% of pork's environmental footprint attributable to the crops raised for feed, this project to advance both climate-smart pork management and feed production supply practices will make a significant impact on the overall sustainability footprint of U.S. pork. (Putnam et al. 2018).

How the process will work:



Principle Partners:

National Pork Board
Nestlé
Sustainable Environmental Consultants
Ducks Unlimited, Inc.
Trust in Food [Farm Journal Inc.]
Farm Credit Council
Millborn Seeds

**For more
information
contact:**

Ashley McDonald
NPB AVP, Sustainability
1776 NW 114th St
Clive, IA 50325
(515) 223-2769
amcdonald@pork.org



©2022 National Pork Board, Des Moines, Iowa USA. This message is funded by America's Pork Checkoff Program.



Ridgewater Meat Cutting Program *Starts Strong*



Meat is cut and processed from a hog at Carlson Meat Shop in Grove City.

Willmar, MN – Retirements of small-town butchers and a growing shortage of meat processing workers due to the pandemic elevated the need for training more meat cutters. Ridgewater College answered the call and is currently one of only two colleges in Minnesota offering training for this profession. With a flexible delivery format that includes asynchronous online classes combined with in-person, off-campus labs completed at a facility near the student, the program has started strong.

According to Jeff Miller, Ridgewater dean of technical instruction, the primary focus in the development of the program was to meet local and regional industry needs for both entry-level and more advanced meat cutting professionals. “Numerous small butcher shops and meat markets have had to close because of a lack of available people to take over the business,” said Miller. “Our program was developed with a large

advisory committee consisting of public and private interest in the meat cutting industry. They helped us determine the appropriate length and the knowledge, skills, and abilities a person should possess when entering the meat cutting profession.”

The 18-credit certificate is just one semester in length, allowing students to enter into the field quickly and without significant cost. Ridgewater does not charge out-of-state tuition.

According to Sophia Thommes, Ridgewater’s meat cutting instructor, fall semester started with eight students and is now up to ten, in part due to the program’s flexibility. “When I started, we adapted our model to allow students the flexibility to find a butcher or meat processing site near them for the labs or the option to work with one of our local partners,” said Thommes. “We’re now an option for students across the nation seeking this type of training.”

Most classes are in four-week blocks, adding to the program’s flexibility. In addition, individuals who are interested in a single course can also select specific courses. “While most students are pursuing the certificate, we do offer flexibility for the hobbyist to take individual courses,” said Thommes. “For example, the Wild Game Animal Processing class starts November 14 and is seeing interest from hunters who are interested in processing their own meat.”

A recent tour for media at Carlson Meat Shop in Grove City reinforced the need for more meat cutters. According to plant manager Jesse Weseman, the shop is booked out until February with processing orders.

The next time to begin the full program is spring semester, which starts January 9, 2023. Anyone interested in learning should visit ridgewater.edu/meat-cutting. Campus and virtual visits are available at ridgewater.edu/visit.



Ridgewater Meat Cutting instructor Sophia Thommes and Carlson Meat Shop Manager Jesse Weseman answered questions from reporters during a recent tour.

Ridgewater College is a community and technical college with campuses in the central Minnesota communities of Willmar and Hutchinson. The college serves more than 5,000 students through its nearly 100 academic programs and more than 68,000 training hours for individuals and businesses through customized training and continuing education. The college is a member of Minnesota State and accredited by the Higher Learning Commission of the North Central Association of Colleges and Schools.

Minnesota State includes 30 community and technical colleges and 7 state universities serving approximately 340,000 students. It is the third largest system of two-year colleges and four-year universities in the United States.



A MEMBER OF MINNESOTA STATE

Pork Checkoff Rate Change



On January 1, 2023, the Pork Checkoff rate reduced by 5 cents to \$0.35 per \$100 of value. This assessment decrease is a result of a resolution passed by voting delegates at the 2022 Pork Industry Forum on March 9-11, 2022, in Louisville, KY.

Pork Checkoff payments are collected for all pigs sold with a change of ownership. This includes sales of weaned pigs, breeding age animals and at the final market destination. The Pork Checkoff is mandated by the Pork Promotion, Research, Consumer Information Act to fund promotion, research, and consumer education activities designed to strengthen the position of pork in the marketplace.

Payments received by NPB for pigs sold on or after the first of the year will reflect the reduced rate.

The rate change was a recommendation of the Pork Industry Vision Task Force – a group of 19 leaders from NPB, NPPC, and various state associations – to ensure the pork industry’s long-term success.



BUILT STRONGER. LASTS LONGER.



Doda USA offers specialized equipment built stronger to execute your agricultural waste handling needs. We approach our sales, installations and on-going maintenance plans with a hands-on approach, making us a trusted partner for your operation to produce.

- > DRAG SYSTEMS
- > PIT PUMPS
- > TRANSFER MIXERS
- > AND MORE

We welcome trade-ins. Trade in and trade up.



Ask us about our free 30-day equipment trials.

507.375.5577 dodausa.com
255 16th Street South, St. James, MN



WE CARE - PUBLIC HEALTH



Ryan Vandendriessche

cares about protecting the health of his pigs and his community. He knows protecting public health is woven into everything he does on the farm.



Ryan raises crops and pigs with his family in rural Marshall, Minnesota. He knows the food they raise on their farms is directly tied to the health of the individuals in his community. That is an important responsibility.

It is one of the reasons Ryan raises his pigs inside modern, climate-controlled barns. **It helps them provide the best care for their pigs.** Much like in human healthcare, Ryan uses the latest science to guide his care for the pigs including their health and diet. It's also why Ryan or another family member checks on their pigs every day to ensure they are healthy and growing.

U.S. pig farmers also hold themselves accountable to using the best practices, techniques, and science to care for their pigs that is validated through the **Pork Quality Assurance® Plus (PQA Plus) program.**



PQA Plus is an education and certification program designed to help farmers and their employees continuously improve production practices including animal well-being, environmental stewardship, animal handling, vaccinations, and public health.

For farmers to sell their pigs, they need to be PQA Plus certified and be recertified every three years. This **helps ensure farmers are doing the right things in the barns to provide the best care for their pigs.**

Ryan also knows many people are not able to see inside pig barns like his. When neighbors drive by his barns, he demonstrates the same commitment he has for the pigs inside by keeping a clean and orderly farm outside.



“You’ve heard a lot of misinformation about how livestock are over-medicated. I do not do that,” Ryan says. “My wife Bobbie Jo is a Doctor of Nursing Practice. She knows medication should only be used when needed. Pig farmers know the same.”

Some people will be surprised to know that pigs rarely need medical care, and when they do, farms work with their veterinarians to provide the appropriate treatment, at the right time and in the right amounts. This is especially important for pigs like Ryan’s who cannot go to market if he does not follow strict withdrawal guidelines for medications like antibiotics.



Much like in human medicine, pig farms want to protect the efficacy of antibiotics and other treatments that are medically important to humans. This means judicious use of medications, under the direction of a veterinarian, and working to prevent illness or injury of every pig. Antibiotic stewardship is one of the many shared values farmers have with members in their community.

“Providing safe and nutritious food is the end product of caring for the wellbeing of our animals,” Ryan says.





MANITOBA PORK

Connects in Minnesota

On December 2, 2022, Minnesota Pork Board president, Brad Hennen, joined Manitoba Minister of Agriculture, Derek Johnson, Consul General from Minneapolis, Ariel Deloya, and Consul & Trade Commissioner, Evan Burt, in downtown Mankato for a networking and partnership-building breakfast, followed by an additional discussion at the Minnesota Pork office in Mankato.

The discussion focused on continued work being done and challenges related to foreign animal disease preparedness, specifically, African Swine Fever. Johnson's overarching recommendation was for the continued collaboration between Manitoba and the upper Midwest pork-producing states. Movement of animals remains critical for Manitoba as 59% of Manitoba's live pigs must leave for processing.

Johnson encouraged innovative thinking on behalf of the industry, as governmental officials involved will need practical guidance and assistance from industry members to adequately respond to an outbreak. Along with this, he also cited the critical need for consensus on stop movement, testing, cleaning and disinfection, and resumption of movement requirements broadly for both the U.S. and Canada's planning.

Johnson shared that Manitoba feels their feral swine population is negligible and is on lands where they aren't allowed to enforce control (first nations). Members of the group said the latest reports of sightings of feral swine were several years ago and were unconfirmed if they were feral swine or just domestic pigs that got loose.



Left to right: Assistant Deputy Minister at Manitoba Agriculture David Hunt, Lauren Servick, Manitoba Agriculture Minister Derek Johnson, Brad Hennen, Canadian Consul General Ariel Delouya, and Consul & Trade Commissioner Evan Burt.

2022 EXECUTIVE BOARD

President:
Brad Hennen
Ghent

Vice President:
Todd Selvik
Waseca

Secretary:
Myrna Welter
Stewartville

Mike Boerboom
Marshall

Chris Compart
Nicollet

Meg Freking
Jackson

Brian Johnson
Walnut Grove

Mary Langhorst
Lafayette

Amber Portner
Sleepy Eye

Roger Punt
Prinsburg

Abbie Redalen
Chatfield

Brian Schwartz
Sleepy Eye

National Pork Board
Dale Stevermer
Easton

Minnesota Pork Board
151 St. Andrews Court, Suite 810
Mankato, MN 56001
(507) 345-8814
(800) 537-7675
mnpork@mnpork.com
www.mnpork.com

STAFF

Jill Resler
Chief Executive Officer

Colleen Carey
Administrative Assistant

Katelyn Gradert
Director of Communications

Lauren Servick
Director of Marketing and
Public Policy Engagement

Pam Voelkel
Director of Events
and Promotions



Pork Please

SWEDISH MEATBALLS



Did you know Minnesotan's voted Swedish Meatballs as their favorite pork dish? We are on board with this vote! Swedish Meatballs are the perfect winter dish with protein-packed ground pork mixed with herbs and seasoning, coated in a delicious, cozy sauce.

Ingredients

½ C breadcrumbs

½ C milk

35 mL cream

1 egg

1 clove minced garlic

1/3 t salt

½ t black pepper

¼ t white pepper

¼ t seasoning (*all-purpose*)

½ onion (*minced*)

1 ½ lb. ground pork

2 T fresh parsley (*chopped*)

1 T butter

2 t olive oil

1/3 C butter (*optional, for gravy*)

¼ C all-purpose flour
(*optional, for gravy*)

1 C heavy cream (*optional, for gravy*)

2 t soy sauce (*optional, for gravy*)

1 t Dijon mustard
(*optional, for gravy*)

Salt and pepper (*optional, for gravy*)

Directions

Mix breadcrumbs, milk, cream, egg, garlic, salt, pepper, and seasoning in a large bowl. Let breadcrumbs soak for 10 minutes.

After milk has absorbed, add the minced onion, ground pork, and chopped parsley.

Mix with hands.

Roll into 24 small balls or 16 larger balls. Refrigerate for at least 30 minutes to help them retain shape when cooking.

In a pan, heat 1 Tablespoon of butter and 2 teaspoons of oil on medium-high heat. Fry two meatballs at a time until each has reached an internal temperature of 165 degrees F and move to a warm plate and cover.

Gravy: Add 1/3 cup of butter to the pan and let it melt. Slowly add in the flour until it turns brown. Pour broth, cream, soy sauce, and Dijon mustard and bring to a simmer. Season with salt and pepper. Mix the sauce and simmer until it is thick.

Place meatballs in the gravy and serve or serve the meatballs over mashed potatoes (with or without the gravy).



2022 CENSUS OF AGRICULTURE

Data Collection is in Full Swing

The Census of Agriculture remains the nation's only comprehensive and impartial agriculture data for every state, county, and U.S. territory. Farm operations of all sizes, urban and rural, which produced and sold, or normally would have sold, \$1,000 or more of agricultural products in 2022, are included in the ag census. The data informs decisions about policy, programs, rural development, research, and more.

Make sure the full scope of Minnesota agriculture is represented by including your operation, big or small, in the results from this project.



NEED HELP? CALL 1-888-424-7828
NASS Customer Support is available Monday - Friday, 8am - 5pm CT
Please be prepared with your survey name and survey code.

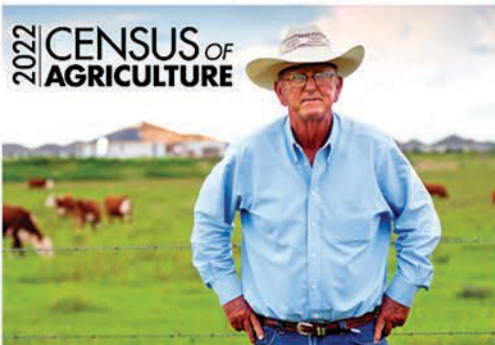
The better the data, the more informed the decisions. NASS data helps:

- Shape programs and initiatives that benefit farmers and ranchers;
- Expand access to resources that help farmers and ranchers;
- Helps farmers and ranchers diversify into new markets, including local and regional food systems specialty crops, and organic production.

Respond in one of the following ways:

1. Online at www.agcounts.usda.gov or
2. Fill out the census questionnaire and return it in the prepaid envelope provided.

The deadline to submit the questionnaire is Monday, February 6, 2023.



RESPOND NOW



YOUR VOICE. YOUR FUTURE. YOUR OPPORTUNITY.
nass.usda.gov/AgCensus



United States Department of Agriculture
National Agricultural Statistics Service

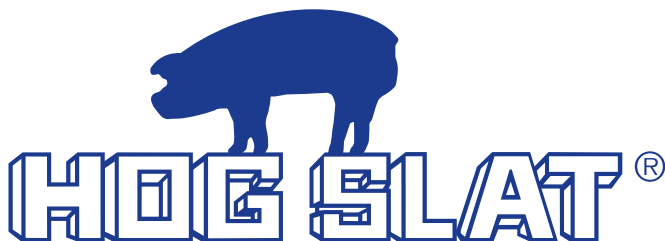


Ready to Build or Remodel?



Let's Get Started.

Whether your plans include new construction or updating existing facilities, you can rely on Hog Slat's experience for your project's success. In-house manufacturing and construction management make Hog Slat the leader in large-scale facility remodeling. Give us a call today.



www.hogslat.com | 800-949-4647

